

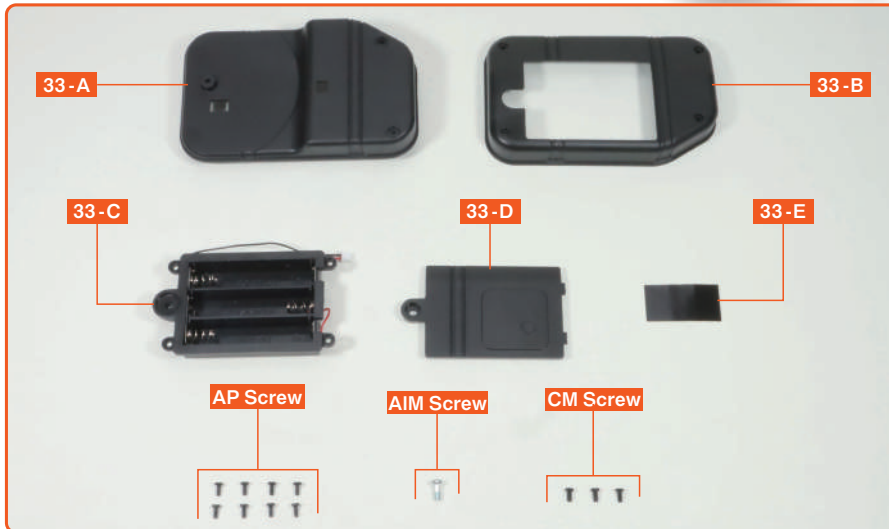
Issue 33

In this issue, we will attach the fuel tank to the rear underside of the chassis. Then, we will assemble the battery box inside the fuel tank.



Attach the Fuel Tank (Battery Box)

※ In this guide "Left" or "(L)", and "Right" or "(R)", refer to the direction as viewed from the driver's seat.



※ The parts used in this assembly guide may differ in certain specifications from the parts supplied.
 ※ Unless otherwise specified in the assembly instructions, please use a No. 1 Phillips screwdriver for assembly.

- 33-A** Upper Fuel Tank

- 33-B** Lower Fuel Tank

- 33-C** Battery Box

- 33-D** Battery Box Cover

- 33-E** Sticker×2+Spare

- AP Screw** (1.7×4mm) ×8+Spare

- AIM Screw** (2.6×6mm) ×1
- ※ No spares are included.

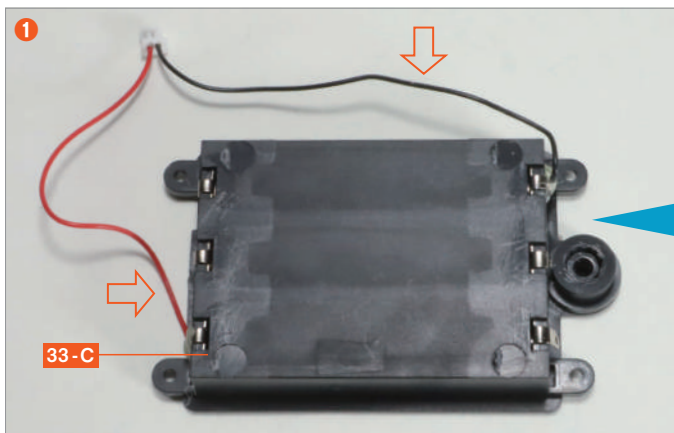
- CM Screw** (2.0×4mm) ×3+Spare

View the follow-along video

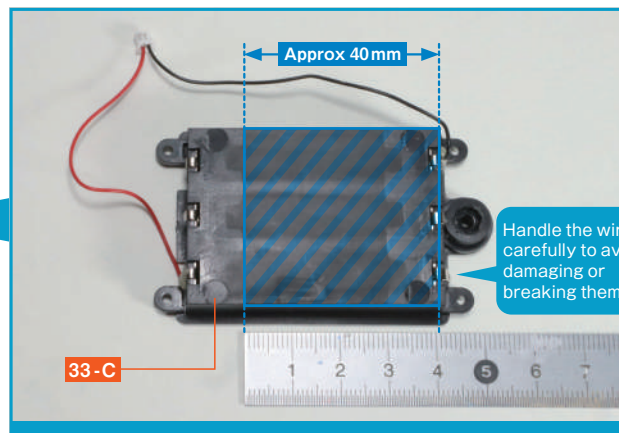


※ Due to the model's design, the shapes of some parts may differ from those of the real vehicle.

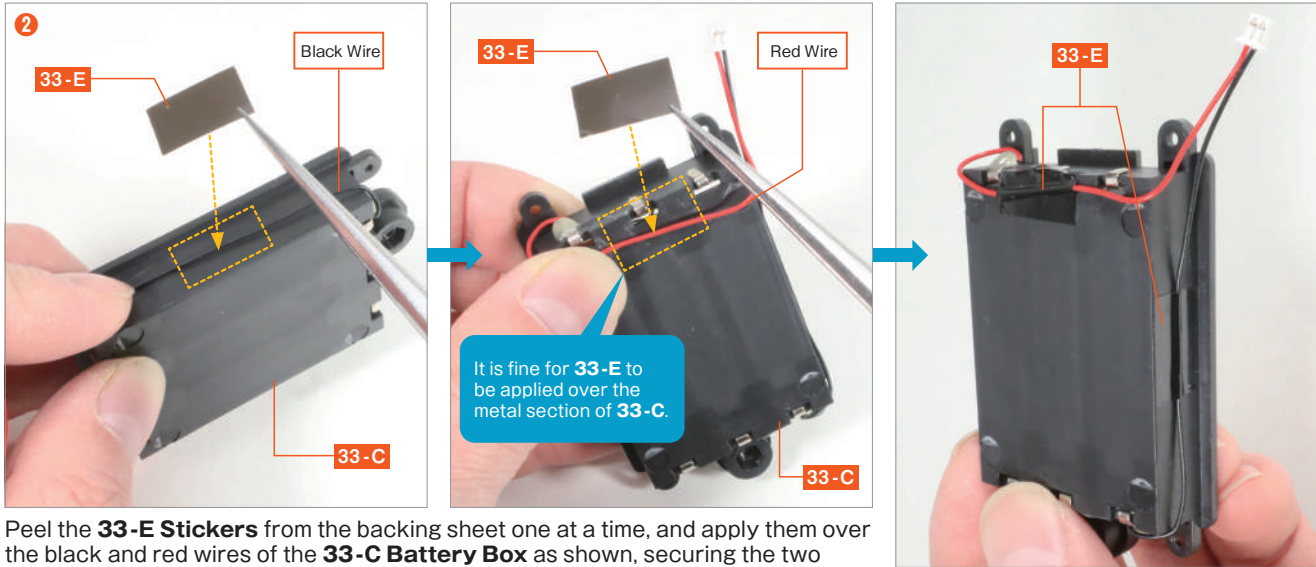
step 1 Assemble the Battery Box



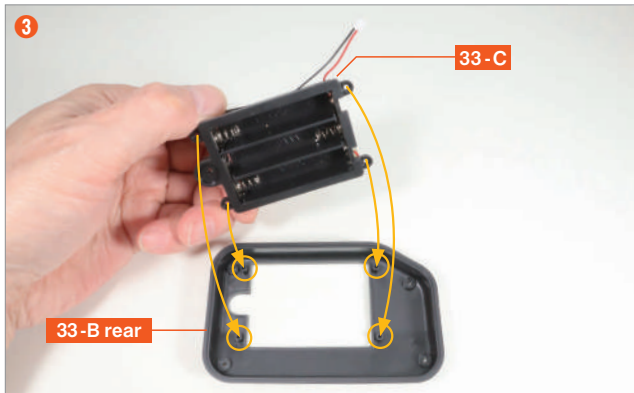
Route the red and black wires of the **33-C Battery Box** along the side as shown.



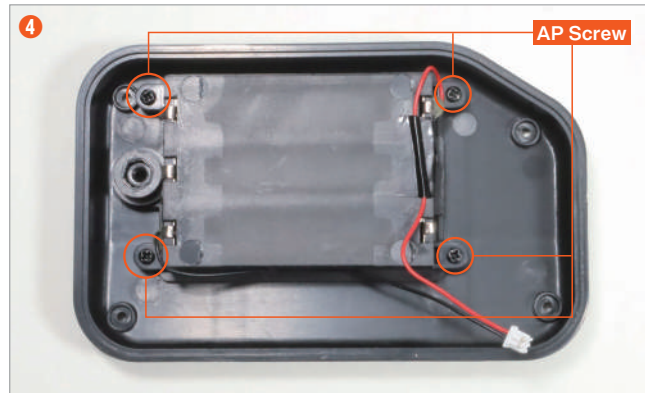
Ensure that the wires do not pass over the surface indicated by the blue diagonal lines.



Peel the **33-E Stickers** from the backing sheet one at a time, and apply them over the black and red wires of the **33-C Battery Box** as shown, securing the two wires in place.

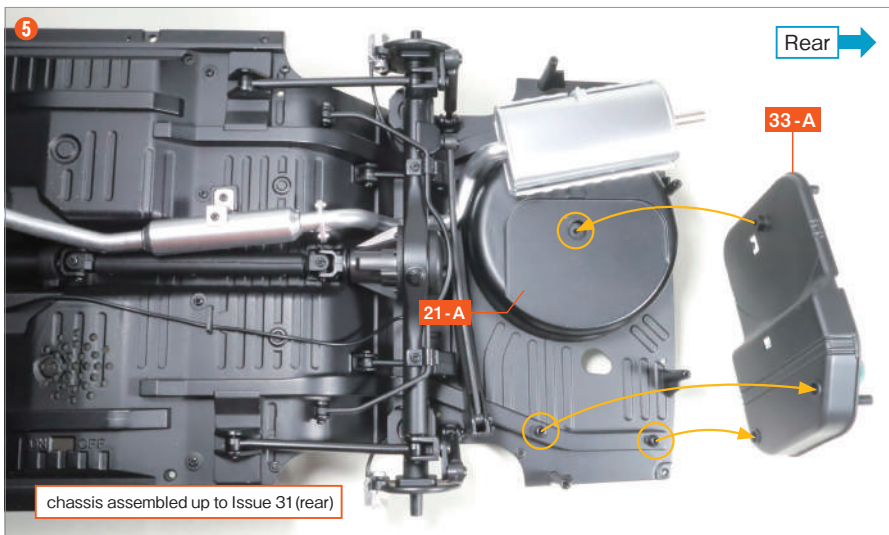


Fit the four recesses of **33-C** onto the four protrusions on the screw holes on the reverse side of the **33-B Lower Fuel Tank**.

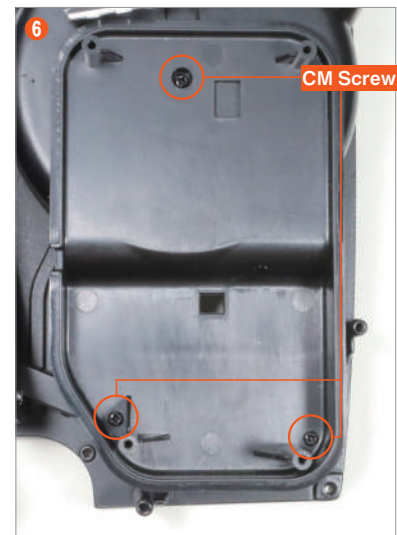


Secure the four points with **AP screws**.

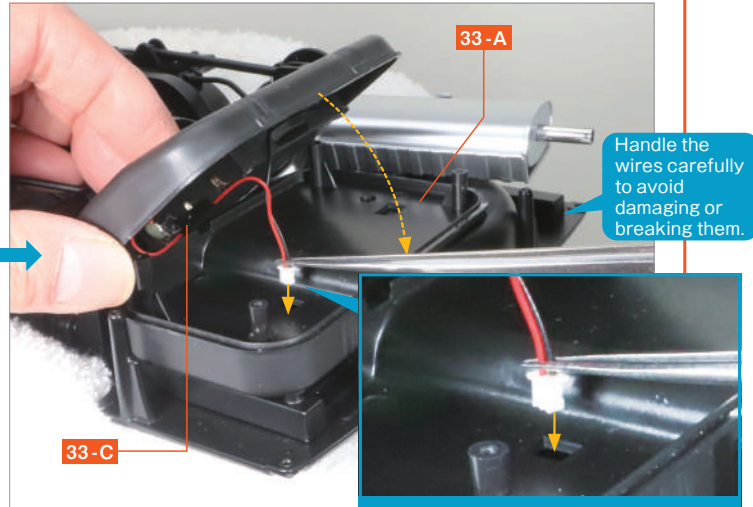
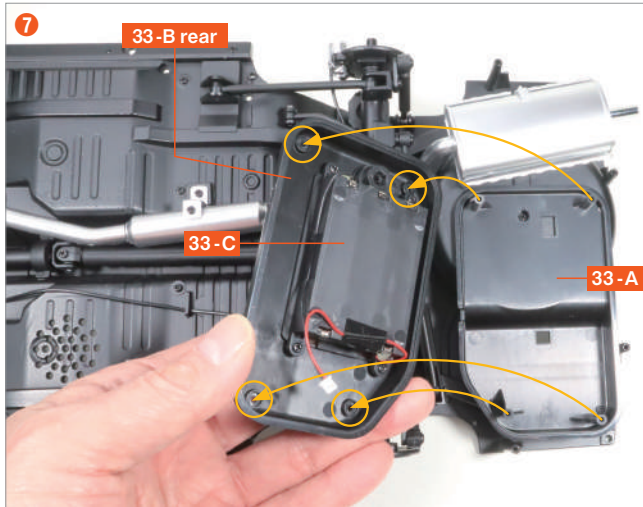
step 2 Attach the Fuel Tank



Prepare the chassis assembled up to Issue 31, and fit together the protrusions and recesses on the **21-A Rear Floor Panel** and the **33-A Upper Fuel Tank**.

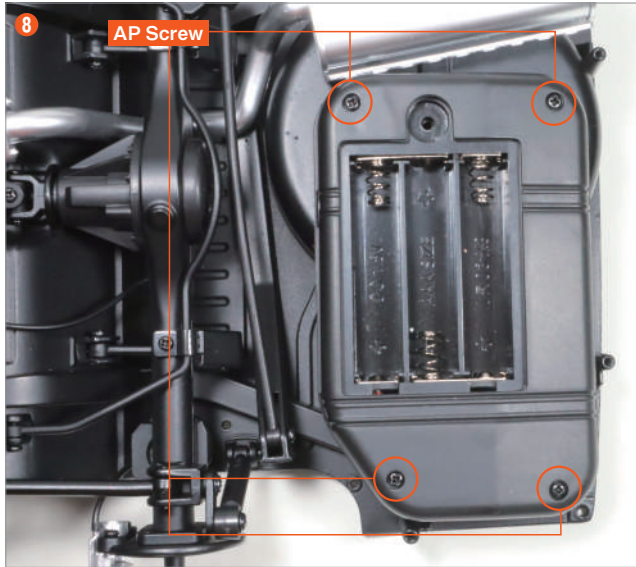


Secure the three points with **CM screws**.

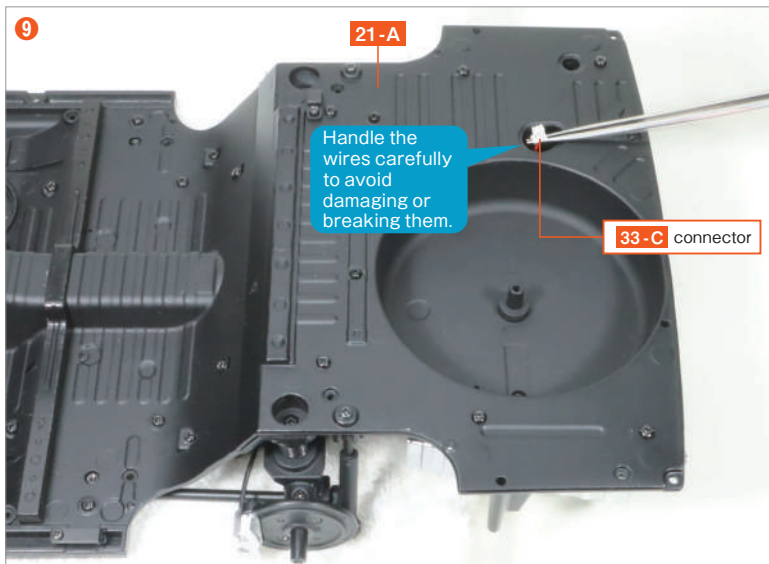


Fit the four recesses on the reverse side of the **33-B Lower Fuel Tank** onto the four protrusions on the screw holes of **33-A**. At the same time, insert the white connector at the end of the wires from **33-C** into the square hole in **33-A** while positioning **33-B** over it.

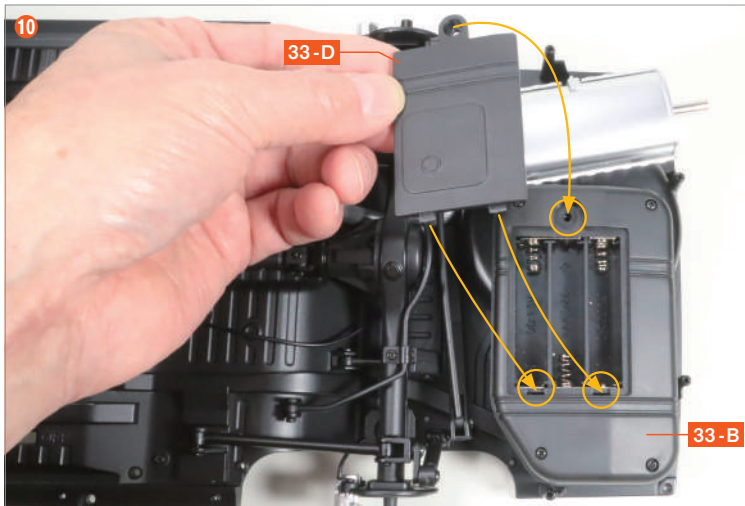
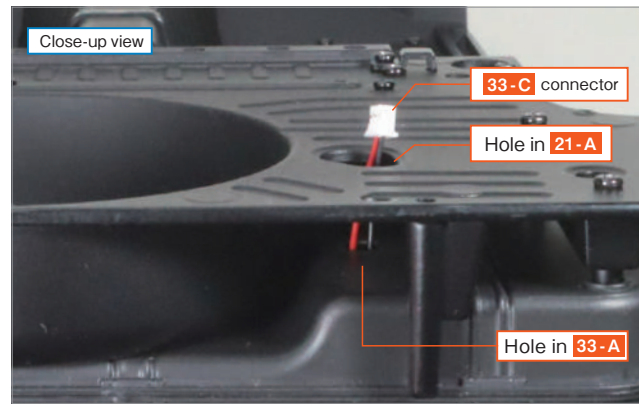
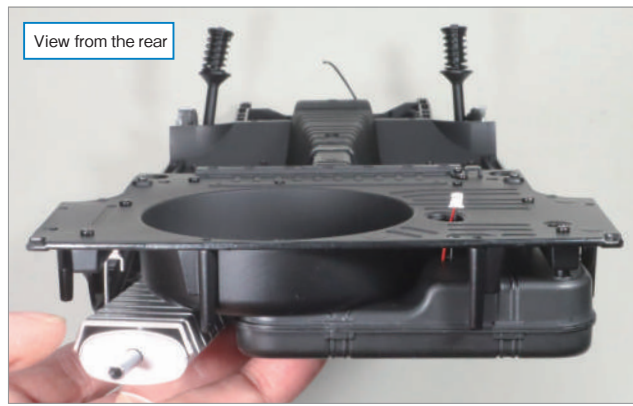
As the wires from **33-C** are short, it is recommended to hold the connector with tweezers when inserting it into the hole in **33-A**.



Secure the four points with **AP screws**.



Turn the chassis over to the front side, then use tweezers to grasp and pull the **33-C** connector through the hole in **21-A**.



Insert the two protrusions of the **33-D Battery Box Cover** into the holes in **33-B**, then fit the semicircular protrusion of **33-D** into the recess in **33-B**, aligning the screw holes.



Secure it with an **AIM screw**.

Complete

The assembly for Issue 33 is complete.

The fuel tank has now been fitted to the chassis, and the battery box has been assembled. Once batteries are installed here, the lighting functions and other electrical features to be wired in later issues will operate. In Issue 34, you will assemble the bulkhead, attach the injector wires to the engine, and begin assembling the engine bay.

